



## TEST REPORT

(This Report is issued subject to the terms & conditions set out below)

Page 1 of 4

**Subject** : RoHS analysis on samples submitted by BPI Technology (S) Pte Ltd on 27/09/2006 and testing commences on 27/09/2006.

**Tested For** : **BPI Technology (S) Pte Ltd**  
Blk 1057 Eunos Ave 3 #02-89  
Singapore 409848  
**Attn : Mr Johnny**

**Test Methods** :

1) EPA 3052	:	Microwave acid digestion for Cd, Pb & Hg
2) EPA 6010B	:	ICP-OES analysis for Cd, Pb & Hg
3) EPA 3060A	:	Alkaline digestion for Hexavalent Chromium (Cr <sup>6+</sup> )
4) EPA 7196A	:	Colorimetric by UV-VIS Spectrophotometry for Hexavalent Chromium (Cr <sup>6+</sup> )
5) In-house Method	:	GC/MS/MS analysis for PBBs & PBDEs BCTD/MC/IHM075/2004

**Sample Description** : Nano Mould Release

**Terms & conditions:**

- (1) The Report is prepared for the sole use of the Client and is prepared based upon the Item submitted, the services required by the Client and the conditions under which the Services are performed by SETSCO. The Report is not intended to be representative of similar or equivalent Services on similar or equivalent Items. The Report does not constitute an endorsement by SETSCO of the item.
- (2) SETSCO agrees to use reasonable diligence in the performance of the Services but no warranties are given and none may be implied directly or indirectly relating to the Services, the Report or the facilities of SETSCO.
- (3) The Report may not be used in any publicity material without the written consent of SETSCO.
- (4) The Report may not be reproduced in part or in full unless approval in writing has been given by SETSCO.
- (5) SETSCO shall under no circumstances be liable to the Client or its agents, servants or representatives, in contract, tort (including negligence or breach of statutory duty) or otherwise for any direct or indirect loss or damage suffered by the Client, its agents, servants or representative howsoever arising or whether connected with the Services provided by SETSCO herein.

**Results :**

Item No.	Element / Compound Name	MDL (ppm)	Result (ppm)
1	Cadmium (Cd)	1	Not Detected
2	Lead (Pb)	10	Not Detected
3	Hexavalent Chromium (Cr <sup>6+</sup> )	2	Not Detected
4	Mercury (Hg)	1	Not Detected
5	<b><u>PBBs (Polybrominated Biphenyl)</u></b>		
	Monobromobiphenyl	3	Not Detected
	Dibromobiphenyl	3	Not Detected
	Tribromobiphenyl	3	Not Detected
	Tetrabromobiphenyl	3	Not Detected
	Pentabromobiphenyl	3	Not Detected
	Hexabromobiphenyl	3	Not Detected
	Heptabromobiphenyl	3	Not Detected
	Octobromobiphenyl	3	Not Detected
	Nonabromobiphenyl	3	Not Detected
	Decabromobiphenyl	3	Not Detected
	<b>Total PBBs (Polybrominated Biphenyl) / Sum of above</b>	-	Not Detected
6	<b><u>PBDEs (Polybrominated Diphenyl Ether)</u></b>		
	Monobromodiphenyl Ether	3	Not Detected
	Dibromodiphenyl Ether	3	Not Detected
	Tribromodiphenyl Ether	3	Not Detected
	Tetrabromodiphenyl Ether	3	Not Detected
	Pentabromodiphenyl Ether	3	Not Detected
	Hexabromodiphenyl Ether	3	Not Detected
	Heptabromodiphenyl Ether	3	Not Detected
	Octobromodiphenyl Ether	3	Not Detected
	Nonabromodiphenyl Ether	3	Not Detected
	Decabromodiphenyl Ether	3	Not Detected
	<b>Total PBDEs (Polybrominated Diphenyl Ether) / Sum of above</b>	-	Not Detected

- Notes : 1) PBBs : C<sub>12</sub>H<sub>10-x</sub>Br<sub>x</sub>  
 2) PBDEs : C<sub>12</sub>H<sub>10-x</sub>Br<sub>x</sub>O  
 3) GC-MS chromatograms are attached on the following pages.

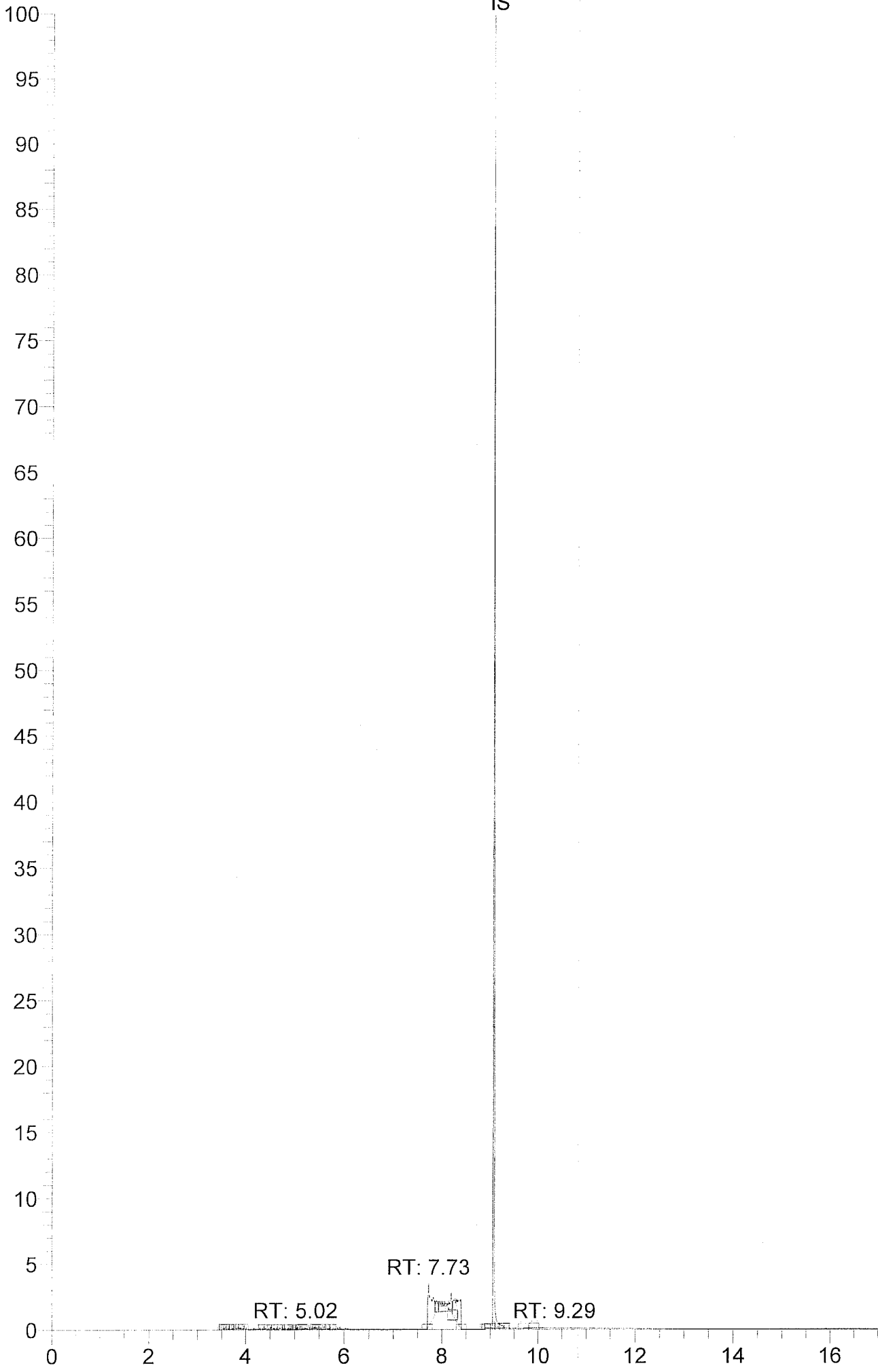


LEI ZHI PEI  
 MANAGER  
 BIOLOGICAL & CHEMICAL TECHNOLOGY DIVISION

RT: 0.00 - 17.09

NL:  
2.07E6  
TIC F: MS  
ICIS  
CH\_11643  
BB

Relative Abundance



RT: 0.00 - 17.07

NL:  
3.94E6  
TIC F: MS  
ICIS  
CH\_11643  
BDE

